

RESOLUTION NO. ~~04~~/10

**RESOLUTION CREATING RURAL SPECIAL IMPROVEMENT MAINTENANCE
DISTRICT TO BE KNOWN AS R.S.I.D. #725M
YELLOWSTONE MEADOWS SUBDIVISION, PHASE II**

WHEREAS, the Board of County Commissioners of Yellowstone County, Montana, met in regular session and executed a Resolution of Intent to Create a Rural Special Improvement Maintenance District #725M for Yellowstone Meadows Subdivision, Phase II, as described in Exhibit A and more particularly shown in Exhibit B (map) and,

WHEREAS, the Clerk and Recorder published the Notice of the passage of Resolution of Intent to Create the District in the Billings Gazette on November 12th, 2004 and November 19th, 2004, and mailed a copy of the Notice to every person, firm or corporation owning property in the District; and,

WHEREAS, the Board of County Commissioners finds, determines and declares that:

1. That the public interest or convenience requires the creation of a Rural Special Improvement Maintenance District as hereinafter described;
2. That the costs of providing street maintenance shall be borne by owners of the property included within the boundaries of the Rural Special Improvement Maintenance District with all existing and future lots being assessed an equal amount on a per lot basis;
3. That the purpose of forming the District is to provide the maintenance, preservation, and repair of the streets located within the boundaries of this District;
4. That the Commissioners have been presented with a valid Petition to create the proposed District;

NOW, THEREFORE, BE IT RESOLVED by the Board of County Commissioners of Yellowstone County as follows:

1. The Commissioners have acquired jurisdiction to create a Rural Special Maintenance District No. 725M to provide for the annual maintenance, grading, operation and preservation of the streets. The maintenance costs are more particularly described in Exhibit C. The estimated costs shown do not preclude other eligible street maintenance expenditures.
2. All of the costs of the District shall be assessed equally on a per lot basis for all existing and future lots. (See Exhibit D.) The boundaries of this District are shown on the map attached as Exhibit B and described in Exhibit A.
3. The number of the Rural Special Maintenance District thereof shall be No. 725M.

4. All lots accessing their property from the streets will benefit from proposed R.S.I.D. and shall be assessed for road maintenance. All lots will be assessed an equal amount based upon the total cost of the maintenance.

5. The Commissioners desire that an Ad Hoc Committee be appointed to make recommendations to the Commissioners with regard to the need for assessments to be made for the maintenance and the amount of the assessments, and how the assessments should be spent. The Commissioners ask that the Petitioners submit a list of some individuals who are willing to serve on the Ad Hoc Committee.

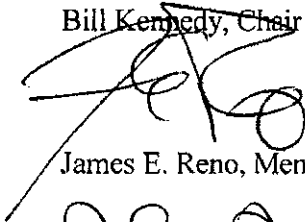
PASSED AND ADOPTED by the Board of County Commissioners of Yellowstone County, Montana, this 14th day of December, 2004.

Board of County Commissioners
Yellowstone County, Montana

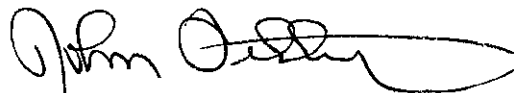
(SEAL)



Bill Kennedy, Chair

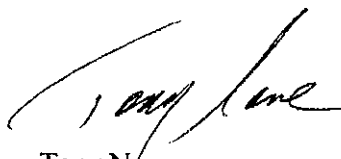


James E. Reno, Member



John Ostlund, Member

ATTEST:



Tony Nave
Clerk and Recorder

EXHIBIT A

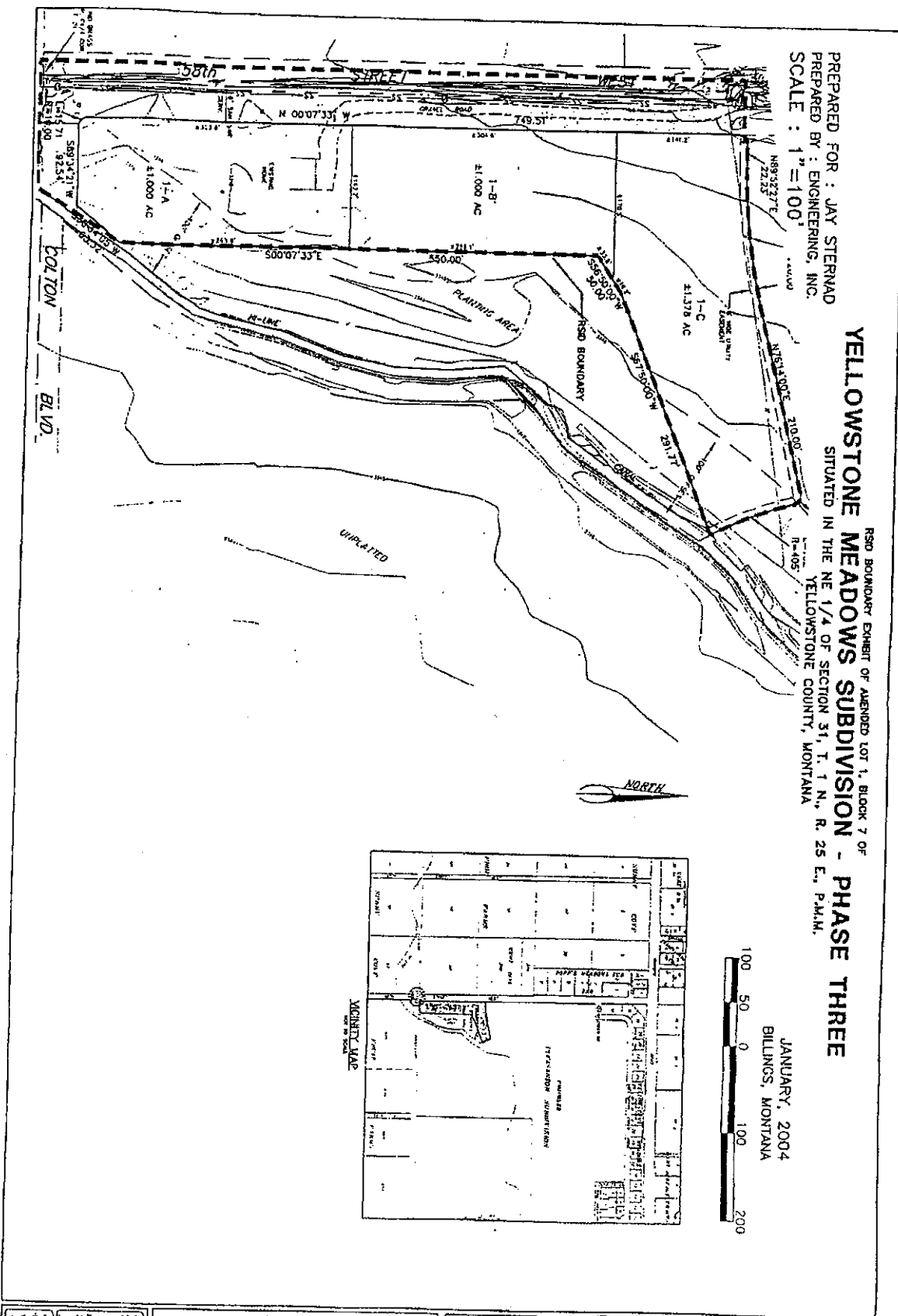
**RESOLUTION OF INTENTION TO CREATE A RURAL
IMPROVEMENT MAINTENANCE DISTRICT TO BE KNOWN AS R.S.I.D. #725M
(YELLOWSTONE MEADOWS SUBDIVISION-PHASE III)**

LEGAL DESCRIPTION

Amended lot 1 block 7, Yellowstone Meadows Subdivision, Phase 3

EXHIBIT B

P:\CADD\LD03-LAND DEV-PROJ\70026_08_YELLOWSTONE_MEADOWS.dwg, 05/12/2004 02:30:56 PM, Bryan, 1:100



PREPARED FOR : JAY STERNAD
 PREPARED BY : ENGINEERING, INC.
 SCALE : 1" = 100'

YELLOWSTONE MEADOWS SUBDIVISION - PHASE THREE
 RSID BOUNDARY EXHIBIT OF AMENDED LOT 1, BLOCK 7 OF
 SITUATED IN THE NE 1/4 OF SECTION 31, T. 1 N., R. 25 E., P.M.M.
 YELLOWSTONE COUNTY, MONTANA

JANUARY, 2004
 BILLINGS, MONTANA

<p>DATE: 1/15/04 DRAWN BY: JAY STERNAD CHECKED BY: JAY STERNAD PROJECT NO: 70026-08</p>	<p>AMENDED LOT 1, BLOCK 7 OF YELLOWSTONE MEADOWS SUBDIVISION - PHASE THREE SITUATED IN THE NE 1/4 OF SECTION 31, T. 1 N., R. 25 E., P.M.M. YELLOWSTONE COUNTY, MONTANA</p> <p>RSID BOUNDARY EXHIBIT</p>	<p>ENGINEERING, INC. Consulting Engineers and Land Surveyors</p>	<p>3140 South 22nd West Hwy Billings, Montana 59102 Phone (406) 256-5515 www.enr.com</p>
--	---	---	---

EXHIBIT C

PETITION TO ESTABLISH A RURAL SPECIAL IMPROVEMENT DISTRICT (RSID)

SECTION C
ESTIMATED ANNUAL MAINTENANCE COST

FALL MAINTENANCE:

ACTIVITY/IMPROVEMENT	ESTIMATED COST
Grading & Blading	\$75
Snow Removal	\$50

WINTER MAINTENANCE:

ACTIVITY/IMPROVEMENT	ESTIMATED COST
Snow Removal	\$75

SPRING MAINTENANCE:

ACTIVITY/IMPROVEMENT	ESTIMATED COST
Grading & Blading	\$75
Weed Control	\$50

SUMMER MAINTENANCE:

ACTIVITY/IMPROVEMENT	ESTIMATED COST

TOTAL ESTIMATED ANNUAL MAINTENANCE COST: \$325

EXHIBIT D

PETITION TO ESTABLISH A RURAL SPECIAL IMPROVEMENT DISTRICT (RSID)

SECTION D
METHOD OF ASSESSMENT

CHOOSE A METHOD OF ASSESSMENT:

- Equal Amount: Distributed Equally Between 3 Lots
- Front Footage: _____
- Other (Describe): _____
- Square Footage (Please list the square footage for each lot within the proposed district):

Property Owner	Lot & Block, Subdivision or C/S	Total Square Footage